



ULTRATRAXX®

This plant is designed for ultra-mobile crushing without sacrificing power or production on the job site.

PRIMARY FEATURES

- » All-hydraulic direct-drive system allows independent operation of conveyors, feeders and impactor with variable speed control.
- 1** Easily removable discharge conveyor allows for quick access to under-crusher area for inspection, maintenance, and cleaning. Easily and quickly inspect and maintain conveyor while removed.
- » Cross-belt, permanent magnet removes steel contaminants from crushed material. Magnet is reversible to allow steel discharge from either side and does not need to be removed for transport.
- » Dual-motor, under-crusher pan feeder with industry-leading discharge clearance in excess of 20" enables greater material flow and virtually eliminates clogging.
- » Grizzly bypass chute and cross conveyor with flop gate to allow for either removal of the material that passes through the grizzly deck for stockpiling or blending back with the crushed material. Conveyor folds for transport or remains out of way of operation when not in use.
- » High torque track drives ensure superior tramping and gradability plus can track while crushing to continue stockpiling.
- » Discharge conveyor height of 12' 5" for feeding directly into optional screener.
- » Heavy duty hopper-construction sized for feeding with a loader or excavator.
- » Features the industry's only LIFETIME ROTOR WARRANTY on its solid-steel, three-bar, sculptured rotor—the industry's heaviest—to keep you up and crushing.*



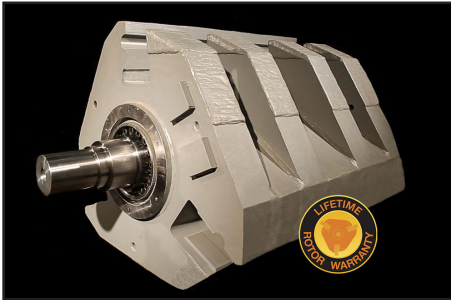
* North America only.



ADDITIONAL FEATURES

- » Discharge conveyor has easy-access grease banks for lubricating head and tail pulley bearings.
- » Available system for real-time remote monitoring of crusher production performance, engine loading, temperature and location— all for observation via your wireless service to your smart phone or computer.
- » Includes wireless remote control to operate and monitor functions of the plant including filter status, hydraulic oil temperature and charge pump pressure.
- » Control can be tethered to unit for operation, if remote battery loses charge.
- » On board filling and filtration unit for hydraulic system.
- » On board hydraulic cooling fan reverses to minimize heat exchanger clogs.
- » Smart feeder drive system monitors engine load for more efficient production.
- » Load-sensing hydraulics improves fuel efficiency and reduces component wear.
- » Fuel capacity for more than 10 hours of operation.

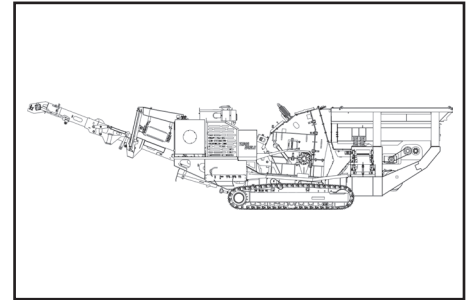
ULTRATRAXX®



Solid-steel, three-bar, sculptured rotor with LIFETIME ROTOR WARRANTY, North America only.



Heavy duty hopper-construction sized for feeding with a loader or excavator.



ULTRATRAXX® TECHNICAL SPECIFICATIONS*

Model	
Impactor	UM-15
Operating Length	50' / 15.2M
Gross Weight	93400lbs / 42365kg
Travel Length	42' 10" / 13.0M
Travel Width	10' 11" / 3.3M
Travel Height	11' 10" / 3.6M
Feed Hopper Capacity	5.4yd ³ / 4.1M ³
Feed Hopper Capacity (Tons)	8.75T / 8MT
Vibrating Feeder	13' x 38" / 3.96M x .97M
Feeder Grizzly Deck	60" long 2 step / 1524mm 2 step
On-Plant Power Supply	325HP / 240kW diesel engine
Discharge Conveyor Width	38" / 965mm
Discharge Conveyor Feed Height (Hydraulic Fold)	12' 5" / 3.8M
Grizzly Conveyor Width	18" / 457mm
Grizzly Conveyor Feed Height (Hydraulic Fold)	7' / 2.1M
Max Crawl Speed	0.8 mph / 1.3 km/h
Max Crawl-and-Crush Speed	8 fpm / 2.4M/min
Track Width	117" / 3.0M
Track Length	12' 2" / 3.7M

ULTRAMAX® IMPACTOR MODEL AND SPECIFICATIONS*

Model	Diameter x Width	Width x Height	Power Required (HP / kW)	Approx. Weight (lbs / kg)	Rotor Weight (lbs / kg)	Production Capacity**
	Rotor (Inches / Millimeters)	Feed Opening (Inches / Millimeters)				
UM-15	44 x 41 / 1118 x 1041	42 x 32 / 1067 x 813	150 - 200 / 112 - 249	28000 / 12700	9750 / 4400	Varies by application.

*Design specifications subject to change without notice.

**Contact your Eagle Sales Representative with your specific application for anticipated production capacity.

Call 800-25-EAGLE (800-253-2453) or visit www.EagleCrusher.com
 P.O. Box 537, Galion, OH 44833 • 419-468-2288 • fax: 419-468-4840 • email: sales@eaglecrusher.com

Rev 05/2020

EAGLE CRUSHER®

©2020 Eagle Crusher Company, Inc.